



eWICKLER

Comfort eW920, eW920-F,
eW940-F

Elektronischer
Gurtwickler

FÜR ALLE
GÄNGIGEN
ROLLLÄDEN

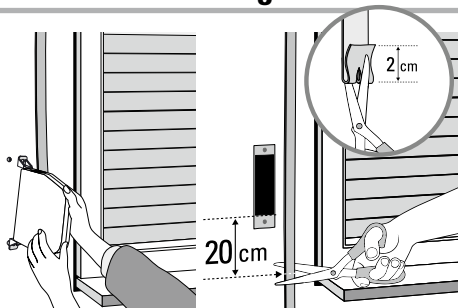
KURZ ANLEITUNG

MADE IN GERMANY

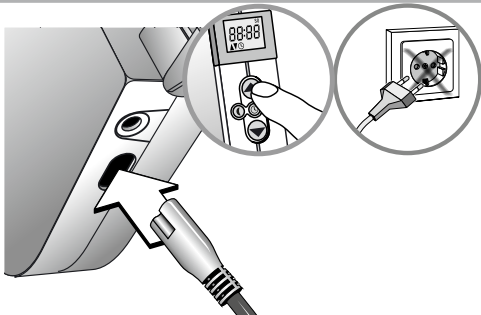
www.wir-elektronik.de

WIR
elektronik

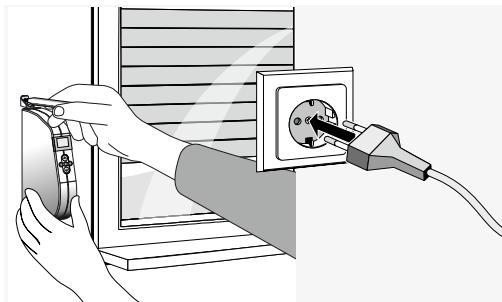
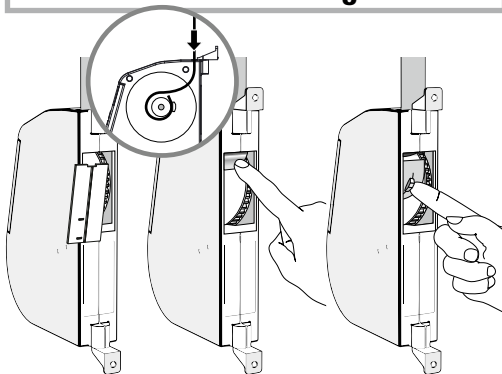
Montage



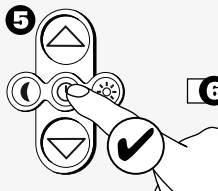
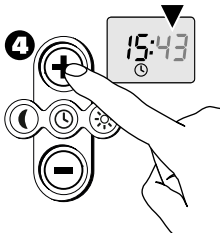
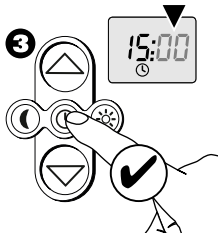
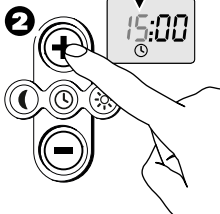
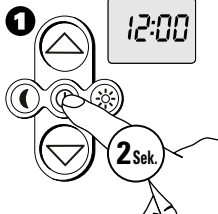
Elektrischer Anschluss



Gurtband einlegen



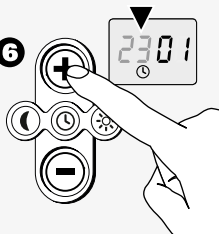
Uhrzeit einstellen



Datum



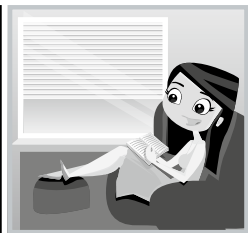
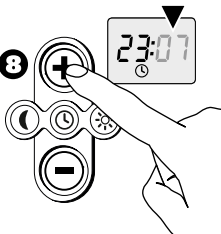
6



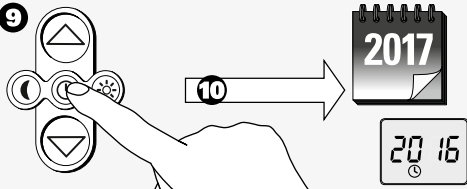
7



8



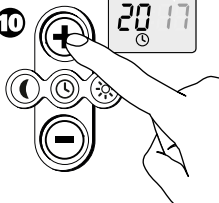
9



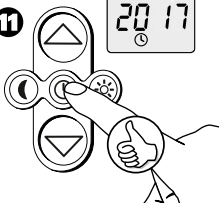
Jahr

2017

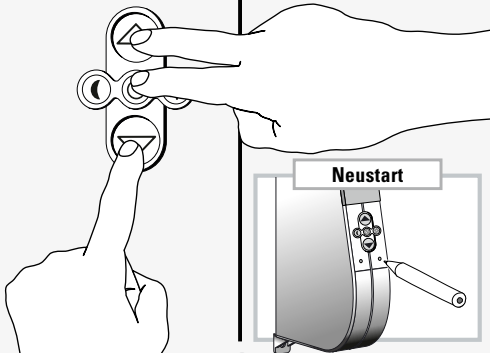
10



11

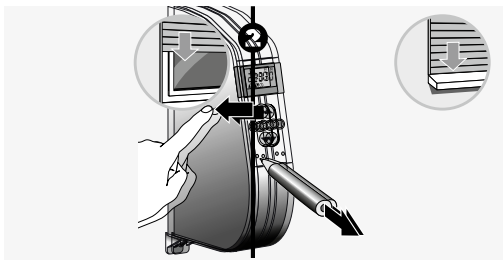
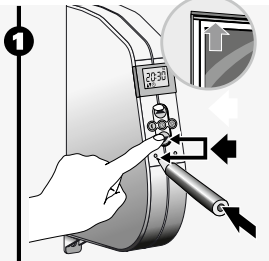
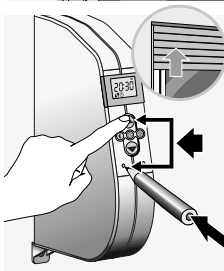
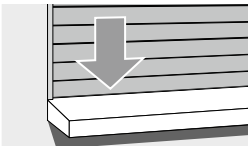
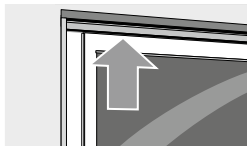


Reset

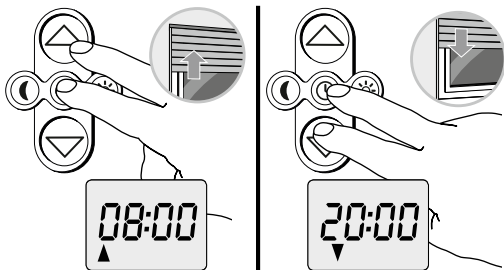


5

Endpunkte einstellen

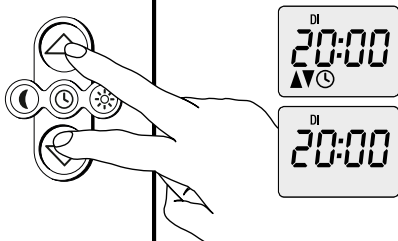


Zeitautomatik



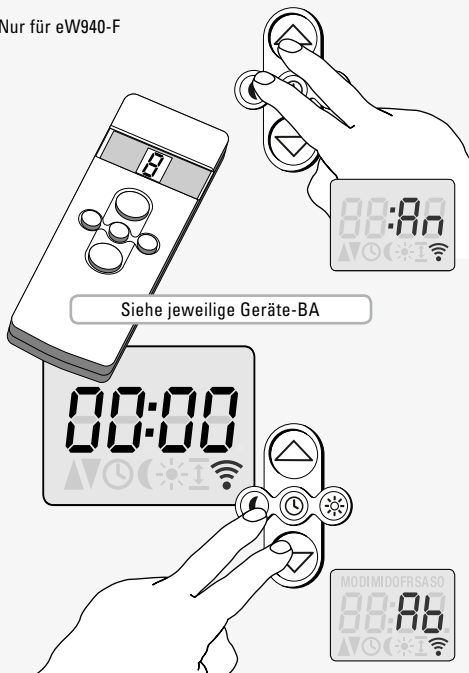
Zeiten Einstellen wie auf Seite 3

Zeitautomatik An und Aus

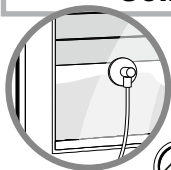


An-/Abmelden Funk

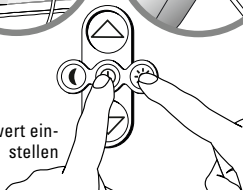
Nur für eW940-F



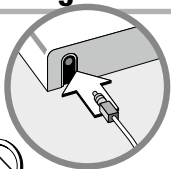
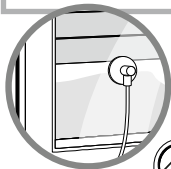
Sonnenautomatik



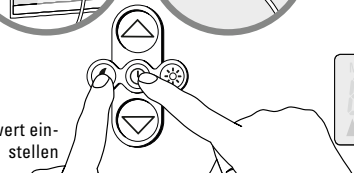
Grenzwert ein-
stellen



Dämmerungsautomatik



Grenzwert ein-
stellen



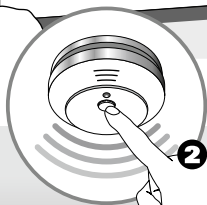
Weitere Informationen BA Seite 26-27

Test Rauchwarnmelder



1

Nur für eW920F
und eW940-F



2

3

Weitere Informationen BA Seite 17

eWICKLER

Comfort eW920, eW920-F, eW940-F

Elektronischer Gurtwickler

www.wir-elektronik.de

KAL AP-Comfort (08.2017)_4008-000052

WIR elektronik GmbH & Co. KG

Hölderlinstraße 57-59

48703 Stadtlohn Deutschland

Tel. (+49) 02563 908930

info@wir-elektronik.de

WIR

elektronik