

eWICKLER

Standard eW910, eW910F,
eW930-F

Elektronischer
Gurtwickler

FÜR ALLE
GÄNGIGEN
ROLLLÄDEN

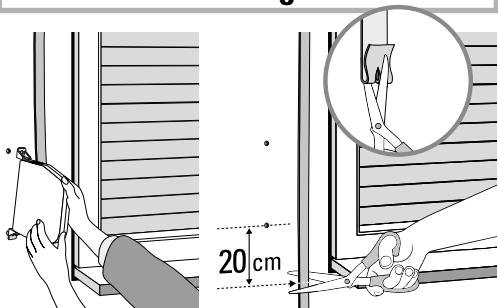
KURZ ANLEITUNG

MADE IN GERMANY

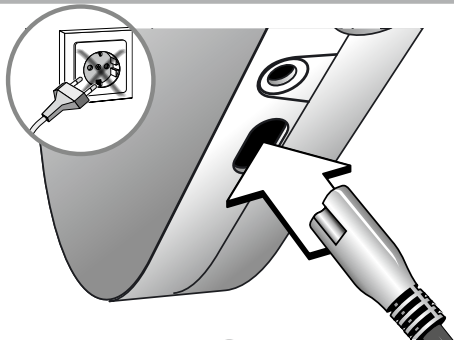
www.wir-elektronik.de

WIR
elektronik

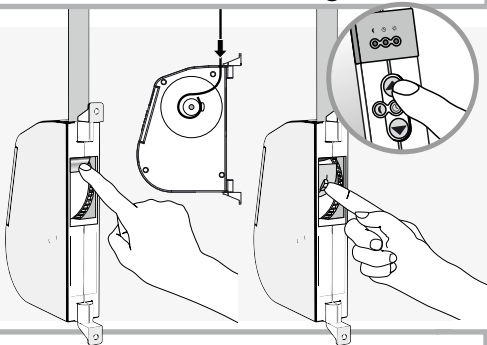
Montage



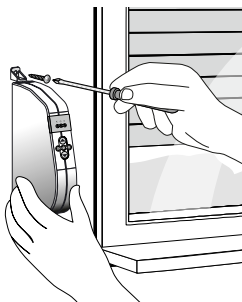
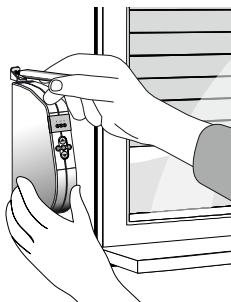
Elektrischer Anschluss



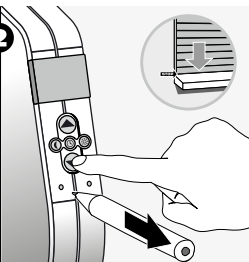
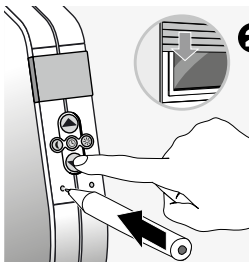
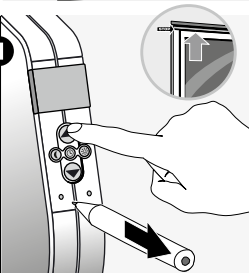
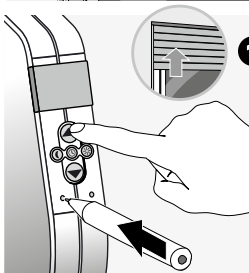
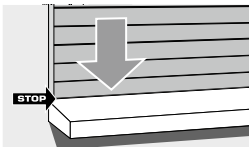
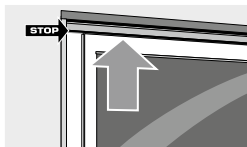
Gurtband einlegen



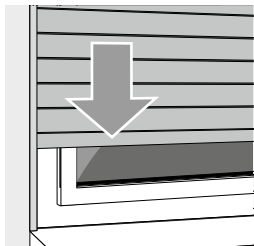
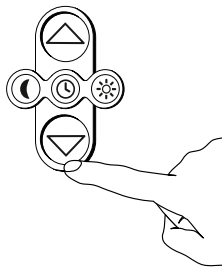
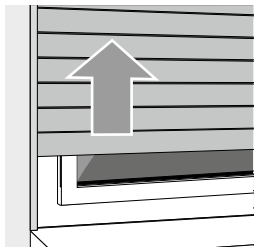
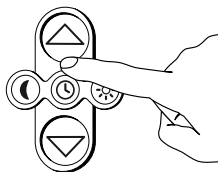
Montage



Endpunkte einstellen

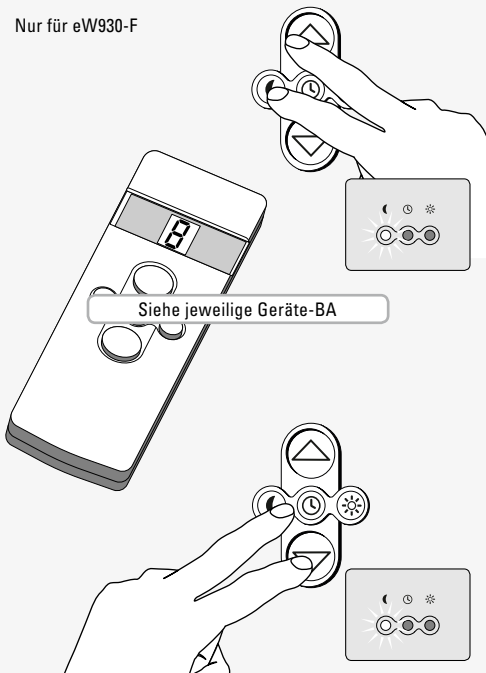


Manuelle Bedienung

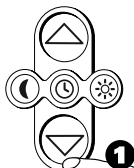


An-/Abmelden Funk

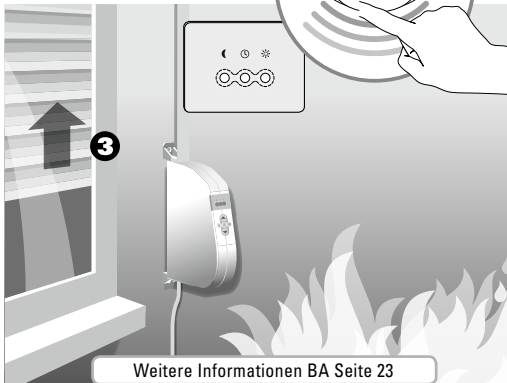
Nur für eW930-F



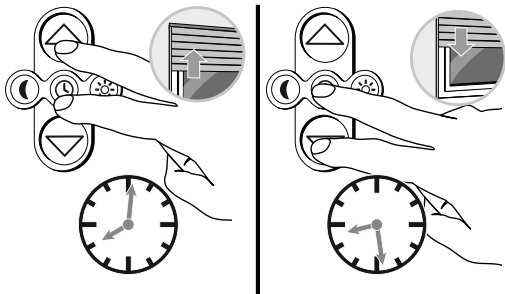
Test Rauchwarnmelder



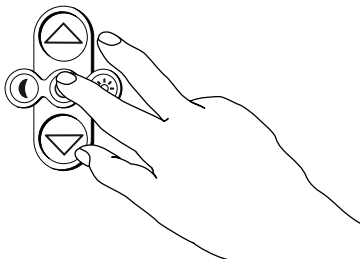
Nur für eW910F
und eW930-F



Zeitautomatik

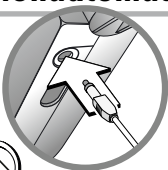
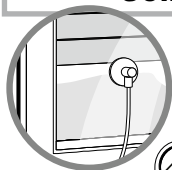


Zeitautomatik An und Aus

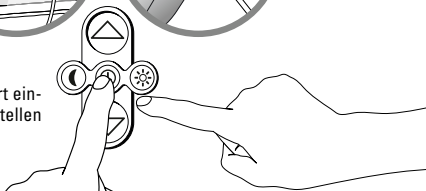


Automatikbetrieb einstellen wie auf Seite 22 BA

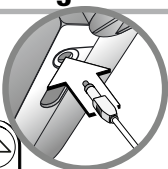
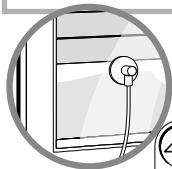
Sonnenautomatik



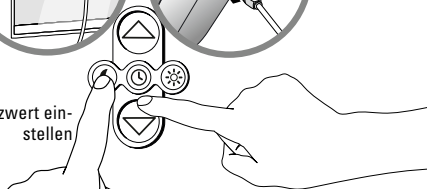
Grenzwert ein-
stellen



Dämmerungsautomatik

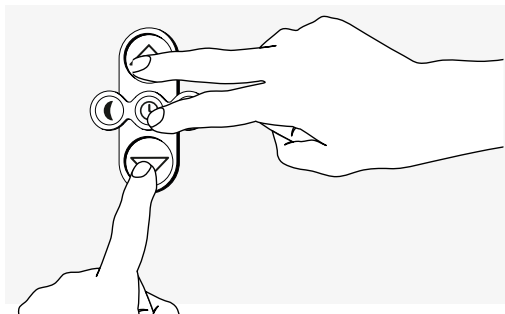


Grenzwert ein-
stellen

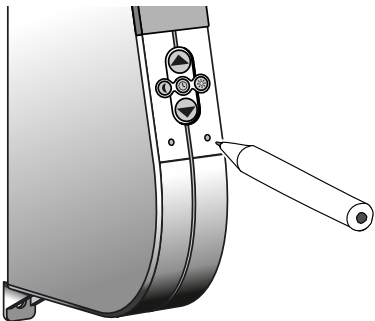


Automatikbetrieb einstellen wie auf Seite 23-25 BA

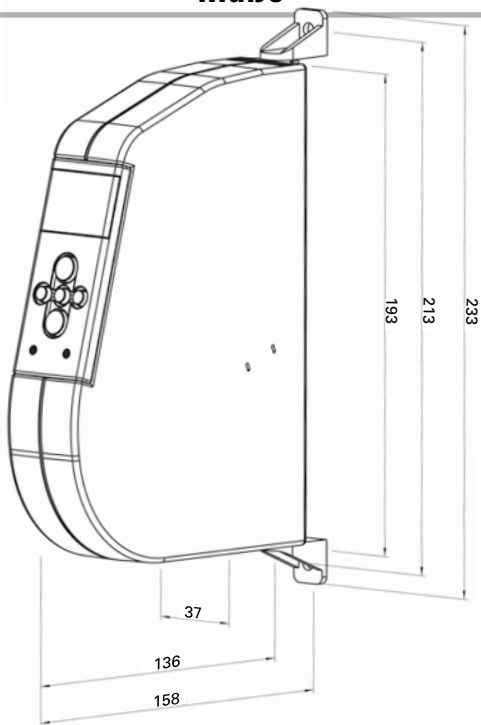
Software Reset



Hardware Reset



Maße



eWICKLER

Standard eW910, eW910-F, eW930-F

Elektronischer Gurtwickler

www.wir-elektronik.de

KAL AP Standard (04.2018)_4008-000066

WIR elektronik GmbH & Co. KG

Hölderlinstraße 57-59

48703 Stadtlohn Deutschland

Tel. (+49) 02563 908930

info@wir-elektronik.de

WIR

elektronik